

8 Commonwealth Lane For Lease



Conveniently located amongst the residential area of Queenstown, 8 Commonwealth Lane is a 4-storey light industrial building with a 6-storey annex block. With its upgraded lobbies, it is ideal for the biomedical industry due to its proximity to One-North.



Accessibility

- Located near Commonwealth MRT station along East- West line
- Accessible via Ayer Rajah Expressway

Building Specifications

Unit Size

- Ranges from 600 - 32,000 sf

Floor Loading

- Basement car park - 20.0 kN/m²
- 1st - 6th storey ancillary office - 2.5 kN/m²
- 1st - 4th storey warehouse - 15.0 kN/m²

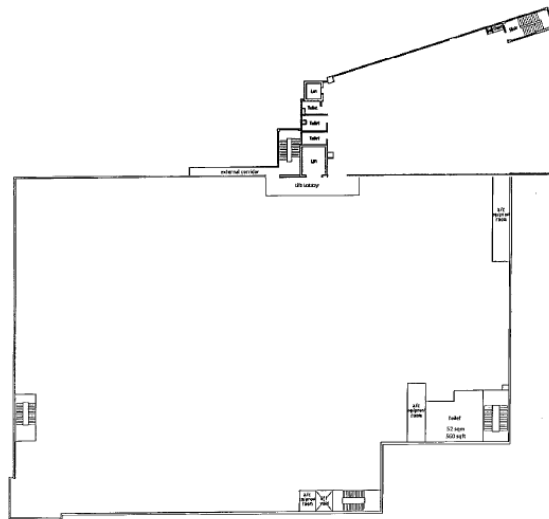
Ceiling Height

- Basement car park - 3.5 m
- 1st storey ancillary office - 5.5 m
- 2nd - 6th storey ancillary office - 4.0 m
- 1st storey warehouse - 7.4 m
- 2nd storey warehouse - 6.4 m
- 3rd storey warehouse - 8.0 m
- 4th storey warehouse - 13.0 m

Signage

- Signage rights available to selected tenants, subject to payment of license fee

Typical Floor Plan



Lifts

- 1 Passenger lift (900 kg)
- 2 Cargo lifts (5,000 kg)

Loading/ Unloading

- 7 loading/unloading bays with dock levellers

Car Parking

- 14 lots

Unit Electrical Provision

- 63 to 100 amps 3 phase

Security

- CCTV cameras complete with digital video recorder
- 24hr security surveillance

Amenities Around

- Eateries nearby

CONTACT US

+ 65 8960 6388

leasing@ ai-reit.com