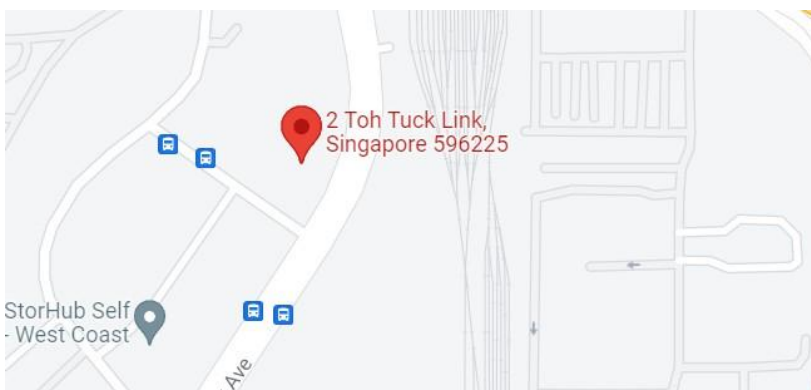


2 TOH TUCK LINK

For Lease



Located within the Toh Tuck Logistics Hub is 2 Toh Tuck Link, a part 4-/part 6-storey warehouse building with a basement carpark. With its close proximity to the Toh Tuck Flyover and residential areas along Toh Guan Road, complemented with its 20 & 40-footer loading bays, it is a boon to logistics and last-mile delivery companies.



Accessibility

- Well-served by Pan Island Expressway and Ayer Rajah Expressway
- Accessible by Jurong East MRT station along East-West line and North-South Line

Building Specifications

Unit Size

- Ranges from 600 - 32,000 sf

Lifts

- 1 Passenger lift (900 kg)
- 2 Cargo lifts (5,000 kg)

Unit Electrical Provision

- 63 to 100 amps 3 phase

Floor Loading

- Basement car park - 20.0 kN/m²
- 1st - 6th storey ancillary office - 2.5 kN/m²
- 1st - 4th storey warehouse - 15.0 kN/m²

Loading/ Unloading

- 7 loading/unloading bays with dock levellers

Security

- CCTV cameras complete with digital video recorder
- 24hr security surveillance

Ceiling Height

- Basement car park - 3.5 m
- 1st storey ancillary office - 5.5 m
- 2nd - 6th storey ancillary office - 4.0 m
- 1st storey warehouse - 7.4 m
- 2nd storey warehouse - 6.4 m
- 3rd storey warehouse - 8.0 m
- 4th storey warehouse - 13.0 m

Car Parking

- 14 lots

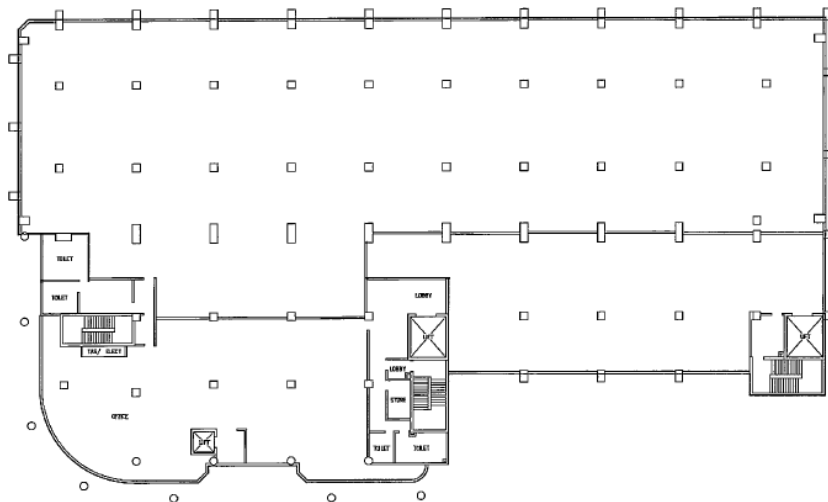
Amenities Around

- Eateries nearby

Signage

Signage rights available to selected tenants, subject to payment of license fee

Typical Floor Plan



CONTACT US

+ 65 8960 6388

leasing@ai-reit.com