



Nestled in the Macpherson Industrial Estate, 123 Genting Lane is an 8-storey building suitable for light industrial activities, the newly refreshed property is close to Aljunied MRT station and Macpherson MRT station. It is also within walking distance to Mattar MRT.



Accessibility

- ◆ Accessible via Mattar MRT station and Aljunied MRT station
- ◆ Well-served by PIE and KPE

Building Specifications

Unit Size

- Ranges from 1,600 - 20,000 sf

Floor Loading

- 1st storey - 19.2 kN/m²
- 2nd - 3rd storey - 14.4 kN/m²
- 4th - 6th storey - 9.6 kN/m²
- 7th - 8th storey - 5.0 kN/m²

Ceiling Height

- 1st storey - 4.6 m
- 2nd - 3rd storey - 4.5 m
- 4th - 8th storey - 3.5 m

Lifts

- 1 Fireman lift (1,150 kg)
- 1 Passenger lift (1,150 kg)
- 2 Cargo lifts (4,000 kg)

Loading/Unloading

- 2 loading/unloading bays with 1 dock leveller

Car Parking

- 56 unsheltered lots

Unit Electrical Provision

- 40 to 300 amps 3 Phase

Security

- CCTV cameras complete with digital video recorder 24hr security surveillance

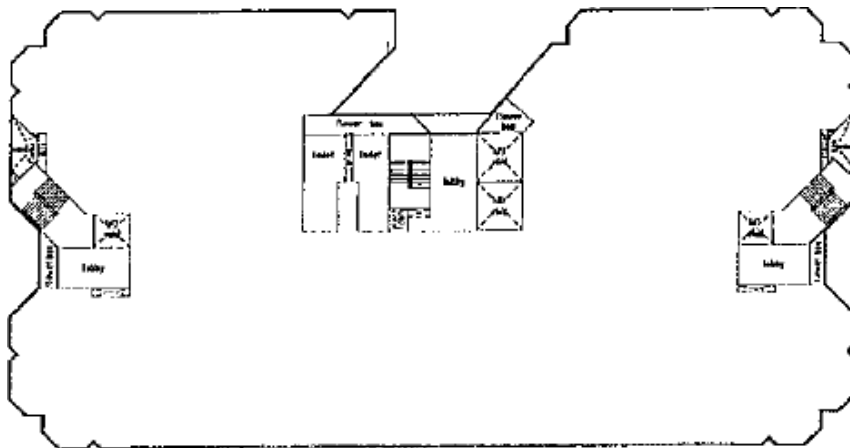
Amenities Around

- Eateries nearby

Signage

- Signage rights available to selected tenants, subject to payment of license fee

Typical Floorplan



CONTACT US

+ 65 8960 6388

leasing@ai-reit.com